


Jessie Duncan Back to School Plan

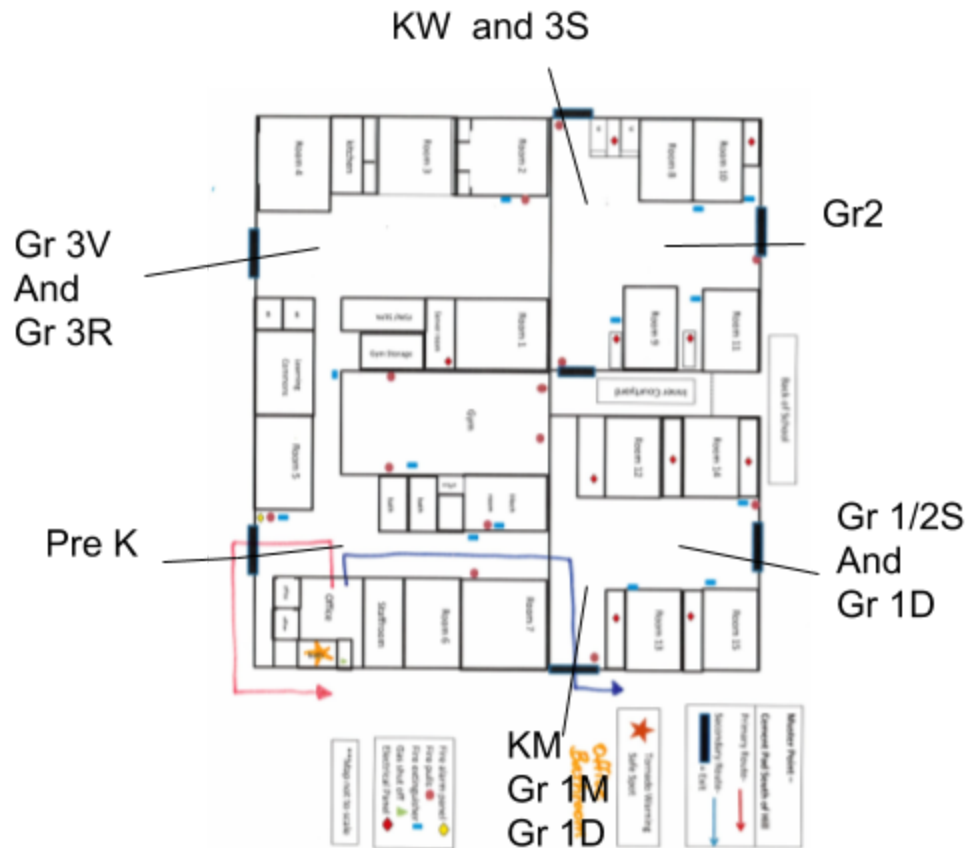
The JDES team would like to welcome you back for our 2020/ 2021 school year! To assist in supporting safe re-entry, we have included some information below as a guide. Please feel free to contact your child's teacher via email, should you have any questions after reviewing this document! We look forward to seeing your child soon!

Before September 1	<ul style="list-style-type: none">• For each of your children, we suggest you purchase a water bottle (only bottle filling stations will be available). They will also need a backpack, and hand sanitizer (we will have hand sanitizer available at school, but you are welcome to bring their own)• Teachers will be sending out a separate email or phone call to make initial connections and provide specific information pertaining to their classroom• Please label all clothing and supplies as the Lost and Found will not be in use at this time. Simple initials on clothing tags and shoes will be sufficient• Take time to review with your children proper physical distancing, handwashing, and respiratory etiquette procedures. <p style="text-align: center;">Alberta Education: new rules for back to school https://youtu.be/GLaj98wmgRc</p> <ul style="list-style-type: none">• Please review that patience and kindness will be necessary during this time. Students may have to take turns parking bikes or entering doors.• It is essential that you update the demographic form that will be coming to you electronically from CESD with parent and emergency contact information and any pre-existing condition information.• When bus drivers connect with you regarding route details, please inform them of any pre-existing conditions that mimic
-------------------------------	---

	<p>COVID symptoms (the same as you will do on your demographic form)</p>
<p>Parking / Drop off and Pick up Areas</p>	<p>Drop off or pick up anywhere along Lincoln street</p> <p>Drop off and pick up anywhere along Newton drive</p>  <ul style="list-style-type: none"> • Please arrange a meeting spot after school prior to the start of school. If older siblings are picking up or if siblings are meeting after school, please establish a meeting spot outside as well.
<p>Before 8:30</p>	<ul style="list-style-type: none"> • If your child is arriving on the bus, they will be asked to come into the school through their designated door when the bus arrives. See the map below for designated entrances. Exiting off the bus will be staggered • The playground will not be open before school. Students will go directly into their classroom. • Unfortunately, Chinook's Edge policy, parents are not allowed on school property for drop off and pick up. • If you are walking your child to school, please bring them to one of the entrances to the school grounds no earlier than 8:25 where supervisors will direct them to enter the school through their designated door. • Supervisors will be at each entrance guiding students with

social distancing and entering the building safely.

- If you are driving to school, please drop students off no earlier than 8:25 as the first bell rings at 8:40. Our supervisors will direct them to enter the school through their designated entrance.
- Kindergarten and Pre - K parents will be contacted by teachers with alternative drop off and pick up procedures to facilitate the safe entry and exit of our new learners.
- Students arriving after the 8:40 bell should enter through the front doors and check-in with the office.



Moving Around

Hallways

- Some directional arrows will be placed in the hallways and direct instruction will also teach students about traffic flow in the hallways.
- Adults will be wearing masks in the common spaces.

	<p><u>Library</u></p> <ul style="list-style-type: none"> • The books will be brought to the classroom for students to access for one week. After using the books will sit for 72 hours before being placed back in circulation. The books will be used in the classroom and not taken home. • Grade 2 and 3 students will learn to use a program called destiny to help choose good fit books and they will be delivered to the classroom. <p><u>Music</u></p> <ul style="list-style-type: none"> • Music will also be taught in the classroom to maintain cohorts and reduce movement in the hallway . • <p><u>Physical Education</u></p> <ul style="list-style-type: none"> • As much as possible PE will be held outdoors. • Planned activities will encourage physical distancing.
In the Classroom	<ul style="list-style-type: none"> • Students will sanitize their hands every time they enter and exit the classroom. • Students will remain in their classroom cohorts during the day. • Students will not be sharing supplies. • Shared technology (ie Chromebooks) will be sanitized after it is used. • Students may be asked to wipe down their space/ equipment when they are finished using it.

Washrooms	<ul style="list-style-type: none"> • Students will request permission to use the washroom • A maximum of four students will be allowed to line up outside the grade levels designated washroom. • A maximum of two students will be allowed in the washroom at a time. • Teachers will provide opportunities for students to use the washroom as needed throughout the day.
Recess	<ul style="list-style-type: none"> • To allow for physical distancing, we have set up cohorts for recess breaks.

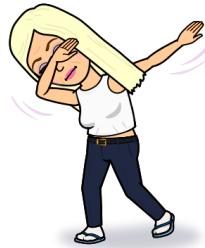
	<ul style="list-style-type: none">• Students will rotate through different playground zones throughout the week.• Students will sanitize their hands as they enter and exit the classroom <p><u>Bell times</u></p> <table><tr><td>Morning bell 8:40</td></tr><tr><td>AM recess group #1 10:10 - 10:25</td></tr><tr><td>AM recess group #2 10:25 - 10:40</td></tr><tr><td>Lunch recess group #1 11:50 - 12:10 The other half of the school will be eating in their classrooms at this time</td></tr><tr><td>Lunch recess group #2 12:10 - 12:30 The other half of the school will be eating in their classrooms at this time</td></tr><tr><td>End of the day bell 3:00 pm</td></tr></table>	Morning bell 8:40	AM recess group #1 10:10 - 10:25	AM recess group #2 10:25 - 10:40	Lunch recess group #1 11:50 - 12:10 The other half of the school will be eating in their classrooms at this time	Lunch recess group #2 12:10 - 12:30 The other half of the school will be eating in their classrooms at this time	End of the day bell 3:00 pm
Morning bell 8:40							
AM recess group #1 10:10 - 10:25							
AM recess group #2 10:25 - 10:40							
Lunch recess group #1 11:50 - 12:10 The other half of the school will be eating in their classrooms at this time							
Lunch recess group #2 12:10 - 12:30 The other half of the school will be eating in their classrooms at this time							
End of the day bell 3:00 pm							
Lunch	<ul style="list-style-type: none">• We will not be able to use microwaves to reheat lunches• Students will be instructed not to share their food or utensils• Students will be required to sit in their desks when eating and teachers will develop plans to engage students through lunch eating time.						
Dismissal	<ul style="list-style-type: none">• If you are picking up your child in one of the designated areas, please pick up as close to 3:00 as possible						

- | | |
|--|---|
| | <ul style="list-style-type: none">Supervisors will be in place to facilitate a safe connection with parents and busing. |
|--|---|

Some fun greetings to encourage social distancing instead of Hi-fives and Handshakes



Peace sign



Strike a pose



Bust a move



Air hugs



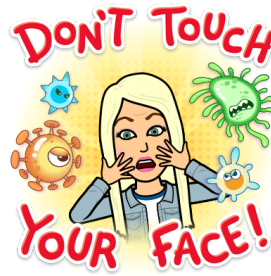
Thumbs up



Staying safe in the classroom:



Wash your hands



Don't touch your face

- Social distancing
- Respiratory etiquette
- Cohorts

Thank you,

Kory Sholdice
Principal

Susan Dillabough
Vice Principal